

Angle profile group

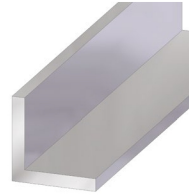
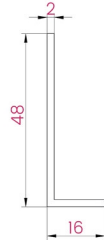
The angle profile group is the base for the production of angle brackets which can be used in a wide range of applications. All profiles in this profile group are delivered in lengths of 5800 mm except the 100x100x15 which is limited to 4000 mm.

Perfil cantoneira

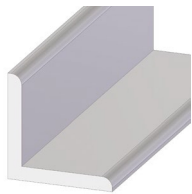
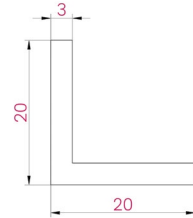
A família de perfil cantoneira é a base dos esquadros, os quais podem ser utilizados nas mais variadas aplicações. Todos os perfis desta família têm um comprimento de 5800 mm, exceptuando o 100x100x15, cujo comprimento é de 4000 mm.



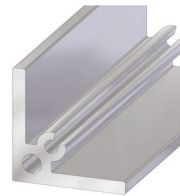
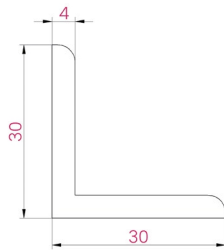
16x48x02



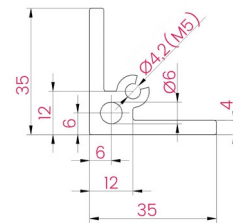
20x20x03



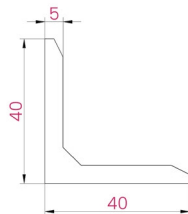
30x30x04



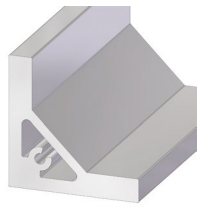
35x35x04



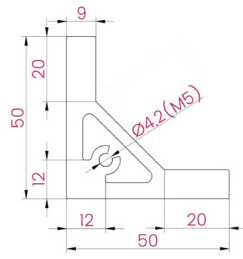
40x40x05



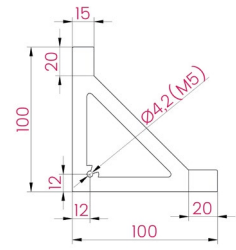
Description <i>Descrição</i>	Code <i>Referência</i>	Mass (kg/m) <i>Massa</i>
16x48x02	AAG01604802	0,4
20x20x03	AAG02002003	0,3
30x30x04	AAG03003004	0,6
35x35x04	AAG03503504	0,9
40x40x05	AAG04004005	1,0



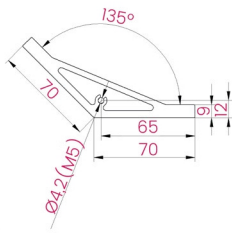
50x50x9



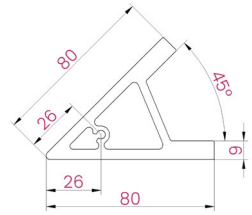
100x100x15



70x70x09 - 135°



80x80x09 - 45°



Description <i>Descrição</i>	Code <i>Referência</i>	Mass (kg/m) <i>Massa</i>
50x50x09	AAG05005009	2,3
100x100x15	AAG10010015	8,5
70x70x09 - 135°	AAG07007009	1,8
80x80x09 - 45°	AAG08008009	2,0