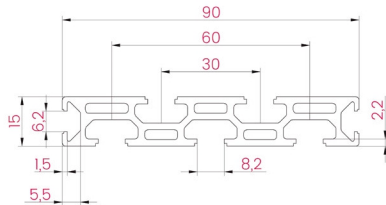
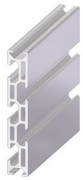


## Profile Group 30

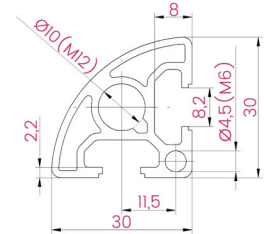
The 30 profile group, with 8,2 mm slots, is suggested for the construction of medium weight assemblies. Examples are machine structures, light work stations, partitions, display frames, among others.



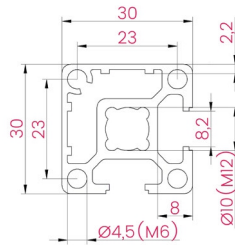
15x90 7 slots

## Perfil de 30

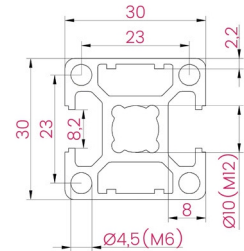
Os perfis de tamanho nominal 30, com rasgo de 8,2 mm, estão aconselhados para a construção de estruturas de envergadura média, como estruturas para máquinas, bancadas de trabalho ligeiro, divisórias, mostruários, etc.



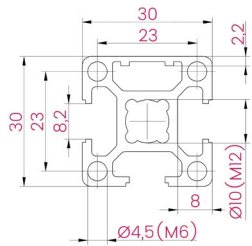
30x30 R90 2 slots



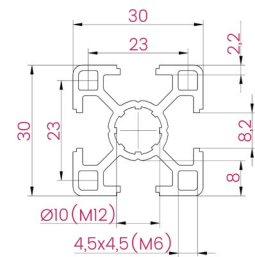
30x30 2 slots adj.



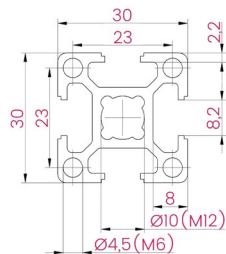
30x30 2 slots opp.



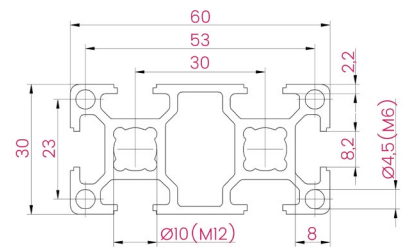
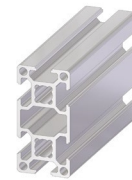
30x30 3 slots



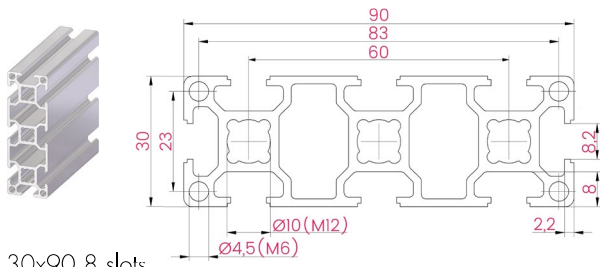
30x30 4 slots light



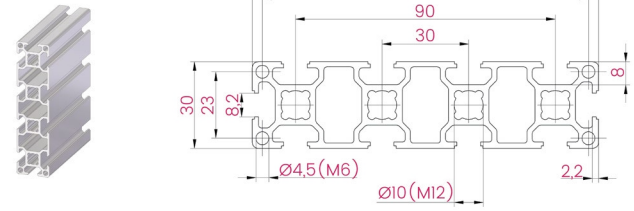
30x30 4 slots



30x60 6 slots



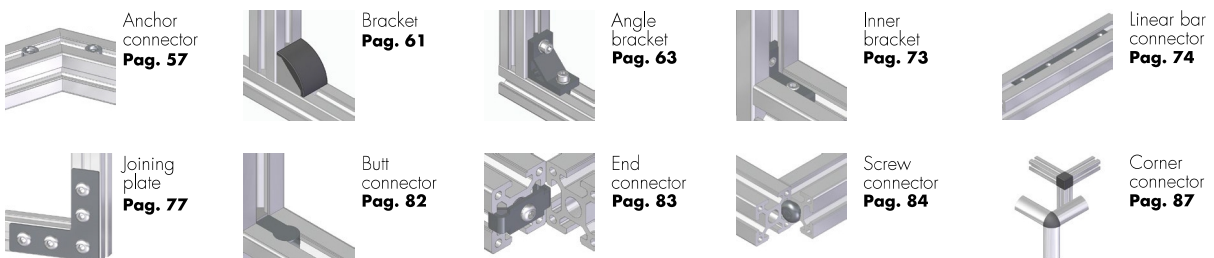
30x90 8 slots



30x120 10 slots

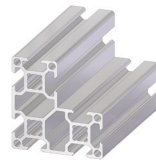
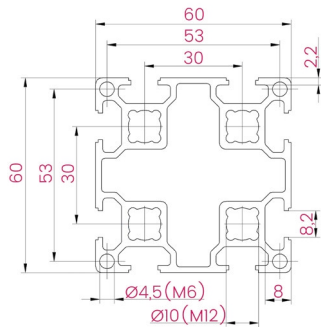
Description <i>Descrição</i>	Code <i>Referência</i>	Mass (kg/m) <i>Massa</i>	Moment of inertia $I_x$ (cm <sup>4</sup> ) <i>Momento de inércia</i>	Moment of inertia $I_y$ (cm <sup>4</sup> ) <i>Momento de inércia</i>	Moment of resistance $W_x$ (cm <sup>3</sup> ) <i>Momento resistente</i>	Moment of resistance $W_y$ (cm <sup>3</sup> ) <i>Momento resistente</i>
15x90 7 slots <i>15x90 7 rasgos</i>	AST01509007	1,5	1,4	40,4	1,9	9,0
30x30 R90 2 slots <i>30x30 R90 2 rasgos</i>	AST030030R9002	0,8	2,5	1,6	1,2	0,9
30x30 2 adjacent slots <i>30x30 2 rasgos adjacentes</i>	AST03003002A	0,9	2,9	2,9	2,0	2,0
30x30 2 opposing slots <i>30x30 2 rasgos opostos</i>	AST03003002O		2,8	3,2	1,9	2,1
30x30 3 slots <i>30x30 3 rasgos</i>	AST03003003		3,0	2,9	2,0	1,9
30x30 4 slots light <i>30x30 4 rasgos ligeiro</i>	AST03003004L	0,8	2,6	2,6	1,8	1,8
30x30 4 slots <i>30x30 4 rasgos</i>	AST03003004	0,9	2,9	2,9	2,0	2,0
30x60 6 slots <i>30x60 6 rasgos</i>	AST03006006	1,6	5,3	19,9	3,5	6,7
30x90 8 slots <i>30x90 8 rasgos</i>	AST03009008	2,2	7,7	62,0	5,1	13,8
30x120 10 slots <i>30x120 10 rasgos</i>	AST03012010	2,9	10,1	139,9	6,7	23,3

Compatible connectors | Conectores compatíveis

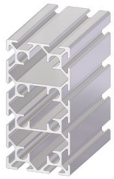
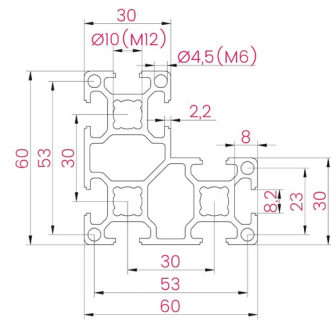




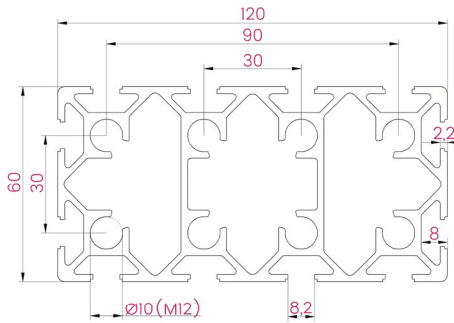
60x60 8 slots



60x60 L 8 slots



60x120 12 slots

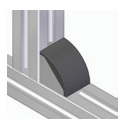


Description <i>Descrição</i>	Code <i>Referência</i>	Mass (kg/m) <i>Massa</i>	Moment of inertia $I_x$ (cm <sup>4</sup> ) <i>Momento de inércia</i>	Moment of inertia $I_y$ (cm <sup>4</sup> ) <i>Momento de inércia</i>	Moment of resistance $W_x$ (cm <sup>3</sup> ) <i>Momento resistente</i>	Moment of resistance $W_y$ (cm <sup>3</sup> ) <i>Momento resistente</i>
60x60 8 slots <i>60x60 8 rasgos</i>	AST06006008	2,5	35,3	35,3	11,8	11,8
60x60 L 8 slots <i>60x60 L 8 rasgos</i>	AST060060L08	2,3	35,2	17,6	8,5	5,0
60x120 12 slots <i>60x120 12 rasgos</i>	AST06012012	4,8	74,7	252,6	24,9	42,1

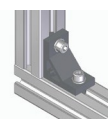
Compatible connectors | Conectores compatíveis



Anchor connector  
**Pag. 57**



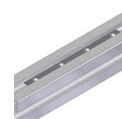
Bracket  
**Pag. 61**



Angle bracket  
**Pag. 63**



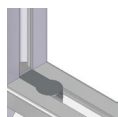
Inner bracket  
**Pag. 73**



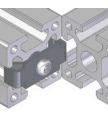
Linear bar connector  
**Pag. 74**



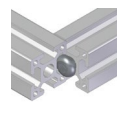
Joining plate  
**Pag. 77**



Built connector  
**Pag. 82**



End connector  
**Pag. 83**



Screw connector  
**Pag. 84**



Corner connector  
**Pag. 87**