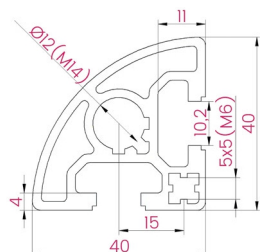


Profile Group 40

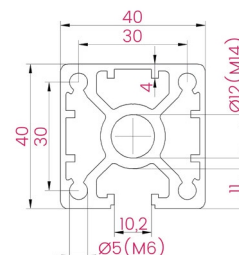
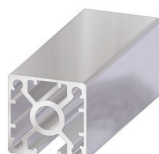
The 40 profile group, with 10,2 mm slots, is suggested for the construction of medium to heavyweight assemblies. Examples are heavier machine structure frames, trolleys, workstations, partitions and display frames, among others.

Perfil de 40

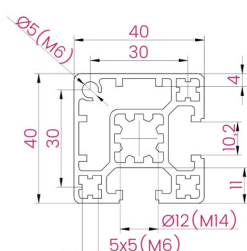
Os perfis de tamanho nominal 40, com rasgos de 10,2 mm, encontram-se entre os perfis mais utilizados e estão aconselhados para a construção de estruturas de envergadura média a pesada, tais como carros de transporte, bancadas de trabalho, divisórias mostruários, etc.



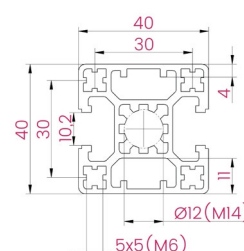
40x40 R90 2 slots



40x40 1 slot



40x40 2 slots adj.



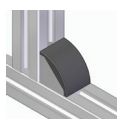
40x40 2 slots opp.

Description <i>Descrição</i>	Code <i>Referência</i>	Mass (kg/m) <i>Massa</i>	Moment of inertia I_x (cm ⁴) <i>Momento de inércia</i>	Moment of inertia I_y (cm ⁴) <i>Momento de inércia</i>	Moment of resistance W_x (cm ³) <i>Momento resistente</i>	Moment of resistance W_y (cm ³) <i>Momento resistente</i>
40x40 R90 2 slots <i>40x40 R90 2 rasgos</i>	AST040040R9002	1,3	8,3	4,8	3,0	1,9
40x40 1 slot <i>40x40 1 rasgo</i>	AST04004001	1,7	10,4	10,1	5,2	5,0
40x40 2 adjacent slots <i>40x40 2 rasgos adjacentes</i>	AST04004002A	1,5	9,6	9,6	4,5	4,5
40x40 2 opposing slots <i>40x40 2 rasgos opostos</i>	AST04004002O			8,6	4,8	4,3

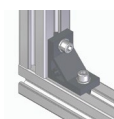
Compatible connectors | Conectores compatíveis



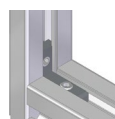
Anchor connector
Pag. 57



Bracket
Pag. 61



Angle bracket
Pag. 63



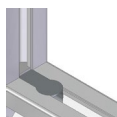
Inner bracket
Pag. 73



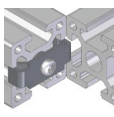
Linear bar connector
Pag. 74



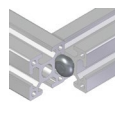
Joining plate
Pag. 77



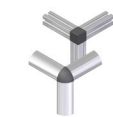
Built connector
Pag. 82



End connector
Pag. 83



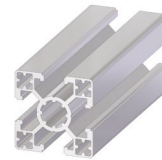
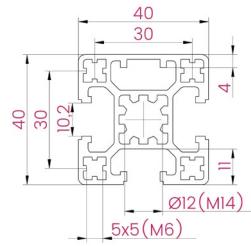
Screw connector
Pag. 84



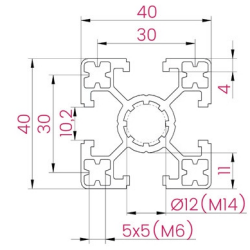
Corner connector
Pag. 87



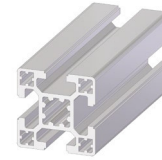
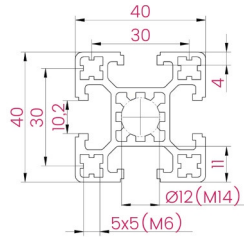
40x40 3 slots



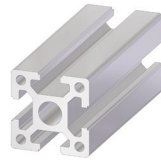
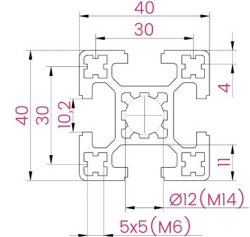
40x40 4 slots super light



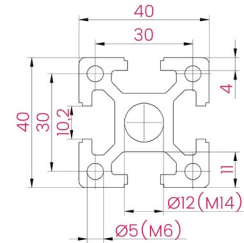
40x40 4 slots light



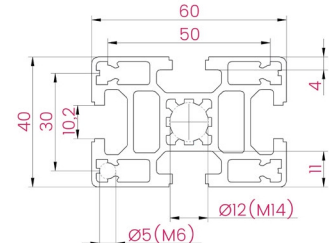
40x40 4 slots



40x40 4 slots heavy



40x60 4 slots

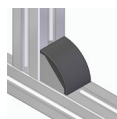


Description <i>Descrição</i>	Code <i>Referência</i>	Mass (kg/m) <i>Massa</i>	Moment of inertia I_x (cm ⁴) <i>Momento de inércia</i>	Moment of inertia I_y (cm ⁴) <i>Momento de inércia</i>	Moment of resistance W_x (cm ³) <i>Momento resistente</i>	Moment of resistance W_y (cm ³) <i>Momento resistente</i>
40x40 3 slots <i>40x40 3 rasgos</i>	AST04004003	1,5	9,1	8,6	4,5	4,3
40x40 4 slots super light <i>40x40 4 rasgos super ligeiro</i>	AST04004004SL	1,3	7,3	7,3	3,6	3,6
40x40 4 slots light <i>40x40 4 rasgos ligeiro</i>	AST04004004L	1,5	8,6	8,6	4,3	4,3
40x40 4 slots <i>40x40 4 rasgos</i>	AST04004004	1,6	9,1	9,1	4,6	4,6
40x40 4 slots heavy <i>40x40 4 rasgos reforçado</i>	AST04004004H	2,0	11,5	11,5	5,8	5,8
40x60 4 slots <i>40x60 4 rasgos</i>	AST04006004	2,3	13,3	27,6	6,6	9,2

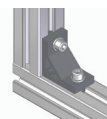
Compatible connectors | Conectores compatíveis



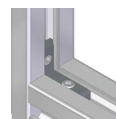
Anchor connector
Pag. 57



Bracket
Pag. 61



Angle bracket
Pag. 63



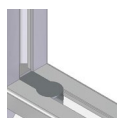
Inner bracket
Pag. 73



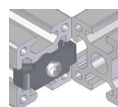
Linear bar connector
Pag. 74



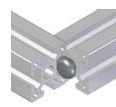
Joining plate
Pag. 77



Butt connector
Pag. 82



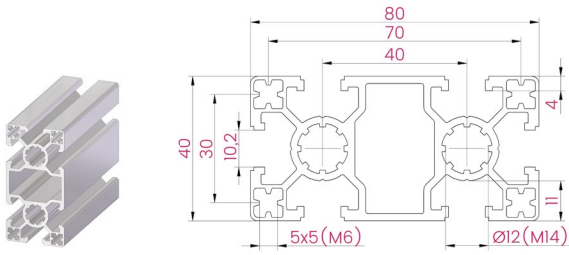
End connector
Pag. 83



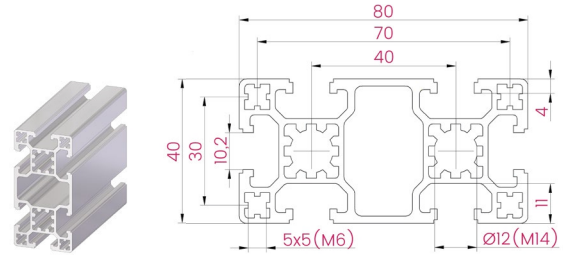
Screw connector
Pag. 84



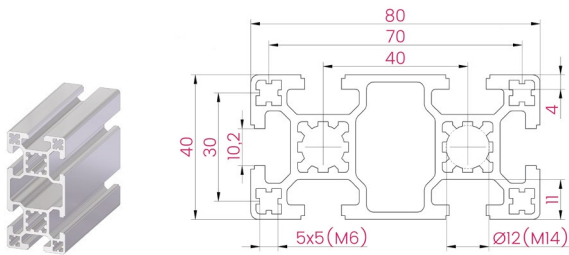
Corner connector
Pag. 87



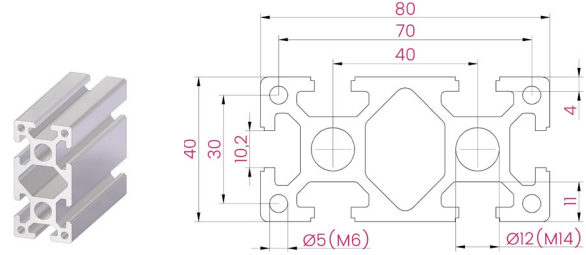
40x80 6 slots super light



40x80 6 slots light



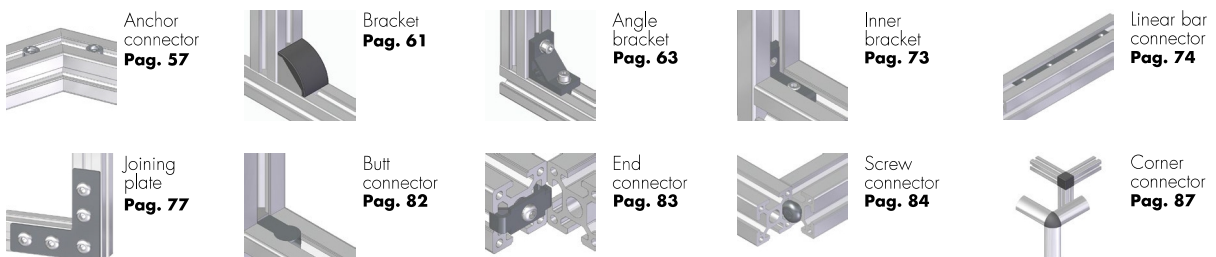
40x80 6 slots

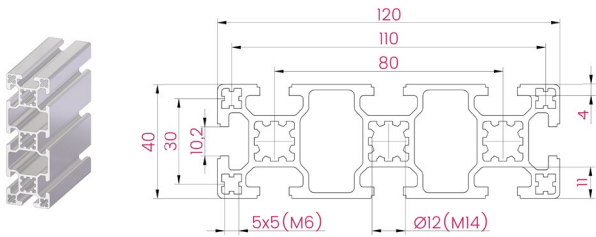


40x80 6 slots heavy

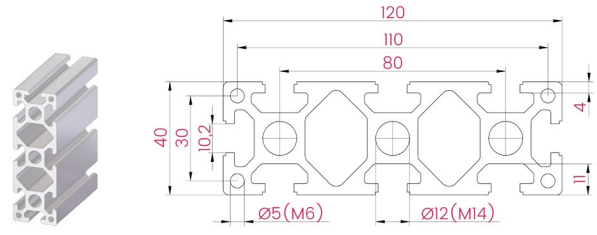
Description <i>Descrição</i>	Code <i>Referência</i>	Mass (kg/m) <i>Massa</i>	Moment of inertia I_x (cm ⁴) <i>Momento de inércia</i>	Moment of inertia I_y (cm ⁴) <i>Momento de inércia</i>	Moment of resistance W_x (cm ³) <i>Momento resistente</i>	Moment of resistance W_y (cm ³) <i>Momento resistente</i>
40x80 6 slots super light <i>40x80 6 rasgos super leveiro</i>	AST04008006SL	2,3	14,3	52,0	7,2	13,0
40x80 6 slots light <i>40x80 6 rasgos ligeiro</i>	AST04008006L	2,5	15,8	59,1	7,9	14,8
40x80 6 slots <i>40x80 6 rasgos</i>	AST04008006	2,7	16,6	63,2	8,3	15,8
40x80 6 slots heavy <i>40x80 6 rasgos reforçado</i>	AST04008006H	3,6	22,2	80,8	11,1	20,2

Compatible connectors | Conectores compatíveis

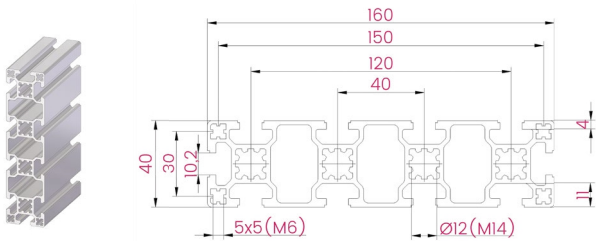




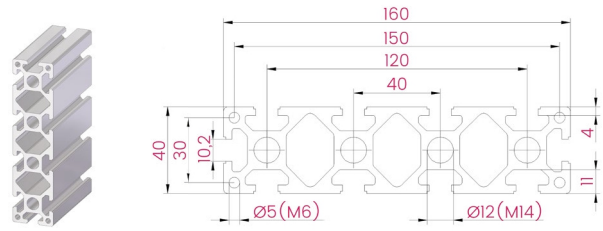
40x120 8 slots



40x120 8 slots heavy



40x160 10 slots



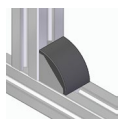
40x160 10 slots heavy

Description <i>Descrição</i>	Code <i>Referência</i>	Mass (kg/m) <i>Massa</i>	Moment of inertia I_x (cm ⁴) <i>Momento de inércia</i>	Moment of inertia I_y (cm ⁴) <i>Momento de inércia</i>	Moment of resistance W_x (cm ³) <i>Momento resistente</i>	Moment of resistance W_y (cm ³) <i>Momento resistente</i>
40x120 8 slots <i>40x120 8 rasgos</i>	AST04012008	3,8	24,1	194,8	12,1	32,5
40x120 8 slots heavy <i>40x120 8 rasgos reforçado</i>	AST04012008H	5,2	33,0	255,3	16,5	42,6
40x160 10 slots <i>40x160 10 rasgos</i>	AST04016010	4,8	31,6	435,7	15,8	54,5
40x160 10 slots heavy <i>40x160 10 rasgos reforçado</i>	AST04016010H	6,8	43,7	582,2	21,8	72,8

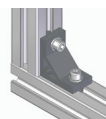
Compatible connectors | Conectores compatíveis



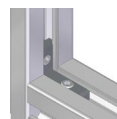
Anchor connector
Pag. 57



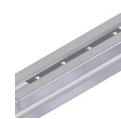
Bracket
Pag. 61



Angle bracket
Pag. 63



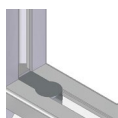
Inner bracket
Pag. 73



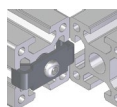
Linear bar connector
Pag. 74



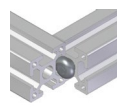
Joining plate
Pag. 77



Butt connector
Pag. 82



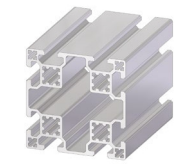
End connector
Pag. 83



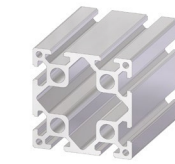
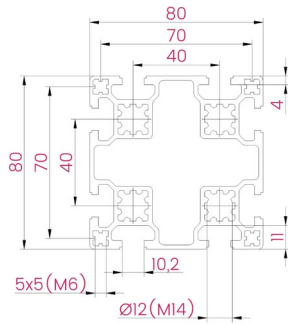
Screw connector
Pag. 84



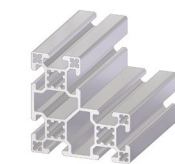
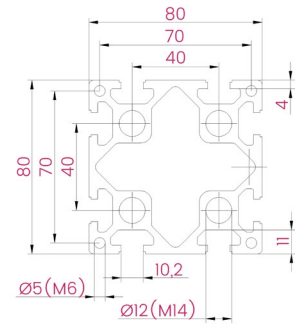
Corner connector
Pag. 87



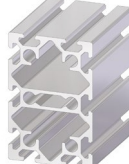
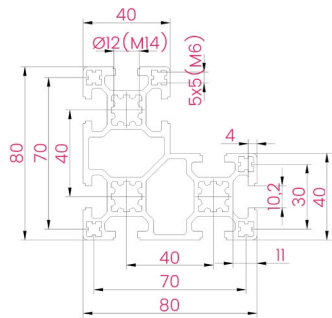
80x80 8 slots



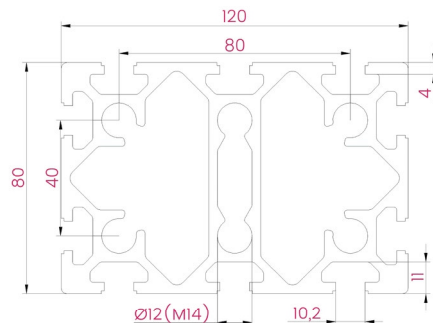
80x80 8 slots heavy



80x80 L 8 slots



80x120 10 slots

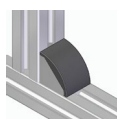


Description <i>Descrição</i>	Code <i>Referência</i>	Mass (kg/m) <i>Massa</i>	Moment of inertia I_x (cm ⁴) <i>Momento de inércia</i>	Moment of inertia I_y (cm ⁴) <i>Momento de inércia</i>	Moment of resistance W_x (cm ³) <i>Momento resistente</i>	Moment of resistance W_y (cm ³) <i>Momento resistente</i>
80x80 8 slots <i>80x80 8 rasgos</i>	AST08008008	4,2	109,9	109,9	27,5	27,5
80x80 8 slots heavy <i>80x80 8 rasgos reforçado</i>	AST08008008H	5,7	148,2	148,2	37,1	37,1
80x80 L 8 slots <i>80x80 L 8 rasgos</i>	AST080080L08	4,0	111,8	56,0	20,1	11,9
80x120 10 slots <i>80x120 10 rasgos</i>	AST08012010	8,3	222,1	449,2	55,5	74,8

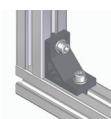
Compatible connectors | Conectores compatíveis



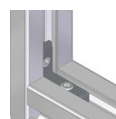
Anchor connector
Pag. 57



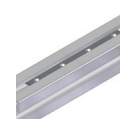
Bracket
Pag. 61



Angle bracket
Pag. 63



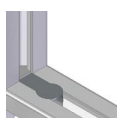
Inner bracket
Pag. 73



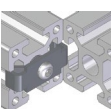
Linear bar connector
Pag. 74



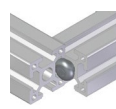
Joining plate
Pag. 77



Butt connector
Pag. 82



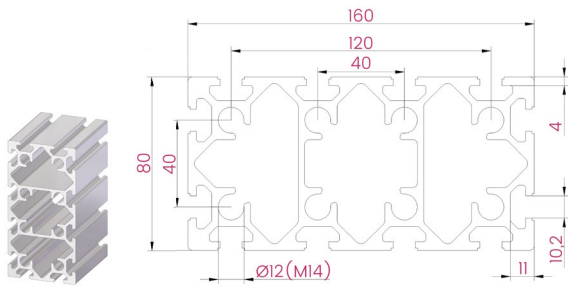
End connector
Pag. 83



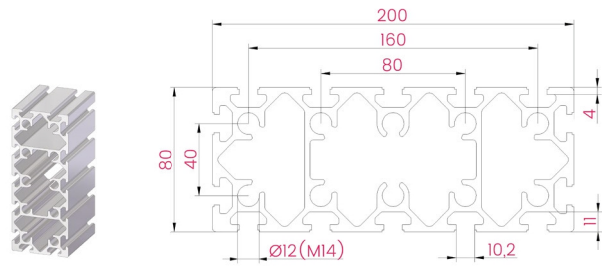
Screw connector
Pag. 84



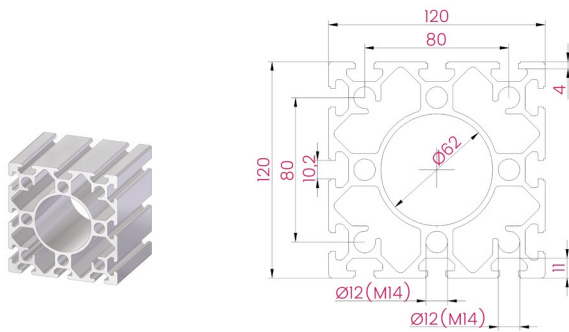
Corner connector
Pag. 87



80x160 12 slots



80x200 14 slots



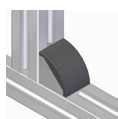
120x120 12 slots

Description <i>Descrição</i>	Code <i>Referência</i>	Mass (kg/m) <i>Massa</i>	Moment of inertia I_x (cm ⁴) <i>Momento de inércia</i>	Moment of inertia I_y (cm ⁴) <i>Momento de inércia</i>	Moment of resistance W_x (cm ³) <i>Momento resistente</i>	Moment of resistance W_y (cm ³) <i>Momento resistente</i>
80x160 12 slots <i>80x160 12 rasgos</i>	AST08016012	10,4	287,5	975,5	71,9	121,9
80x200 14 slots <i>80x200 14 rasgos</i>	AST08020014	12,3	353,1	1789,8	88,3	179,0
120x120 12 slots <i>120x120 12 rasgos</i>	AST12012012	11,5	659,1	659,1	109,9	109,9

Compatible connectors | Conectores compatíveis



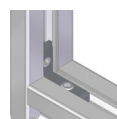
Anchor connector
Pag. 57



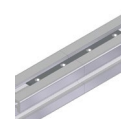
Bracket
Pag. 61



Angle bracket
Pag. 63



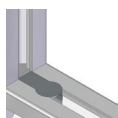
Inner bracket
Pag. 73



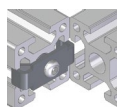
Linear bar connector
Pag. 74



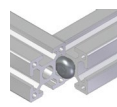
Joining plate
Pag. 77



Butt connector
Pag. 82



End connector
Pag. 83



Screw connector
Pag. 84



Corner connector
Pag. 87