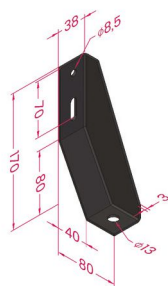


## Leg support

### - Angle support

The leg support provides added stability and security to structures with leveling feet.

Material: black electrophoresis steel.

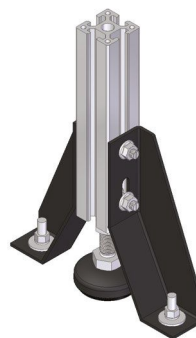


## Apoio de perna

### - Apoio em ângulo

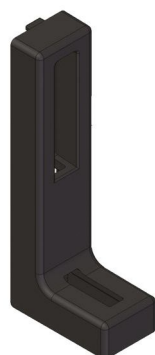
Os apoios de perna facultam segurança e estabilidade acrescidas aos pés niveladores instalados.

Material: aço oxidado a preto.

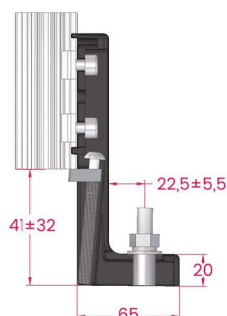
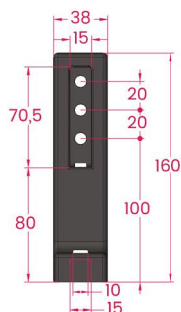


Description <i>Descrição</i>	Code <i>Referência</i>	Mass (g) <i>Massa</i>
Left angle leg support <i>Apoio para perna em ângulo esquerdo</i>	EBAL	346
Right angle leg support <i>Apoio para perna em ângulo direito</i>	EBAR	346
Pair of angle leg supports <i>Par de apoios para perna em ângulo</i>	EBAP	692

### - L shaped support



### - Apoio em L



Description <i>Descrição</i>	Code <i>Referência</i>	Mass (g) <i>Massa</i>
L base <i>Apoio para perna em L rasgo 10</i>	ELB10	276