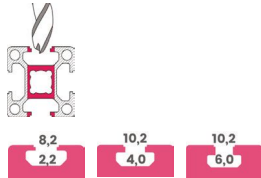


Plate for castors with stems

The castor plate provides the ideal solution for the placement of a castor on the face of a profile, especially on a mid length position. On the other hand, a hole must be drilled in order to accommodate the stem (30 mm depth, 12,4 mm diameter). Assembly accessories included.

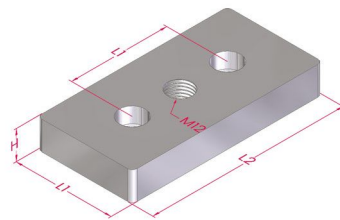
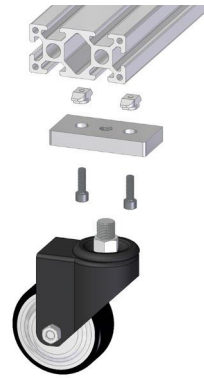
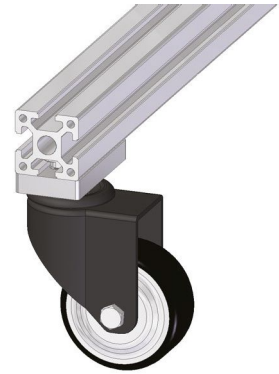
Material: zinc plated steel.



Placa para rodízios com perno

A placa de montagem é a solução ideal para a transição entre a face do perfil e o rodízio. É de salientar que é necessário realizar um furo de 30 mm e 12,4 mm de diâmetro para acomodar o restante do perno roscado. Acessórios de montagem incluídos.

Material: aço zincado.



Description Descrição	Code Referência	H	L1	L2	Mass (g) Massa
Profile 30 adaptor for castor with threaded stem Adaptador para rodízio com perno roscado - 30	ERP30.KIT	10	30	60	162
Profile 40 adaptor for castor with threaded stem Adaptador para rodízio com perno roscado - 40	ERP40.KIT	12	40	80	296
Profile 45 adaptor for castor with threaded stem Adaptador para rodízio com perno roscado - 45	ERP45.KIT		45	90	377